

Coomboona Afterburner **EVOLVE**

Afterburner / Mogul VG85 / Snowman
 Herdbook: AUS1968589 DOB: 31/10/2016

Coomboona Afterburner Evolve ET

SIRE: Sandy-Valley Afterburner
 DAM: Silverridge V Mogul Evon VG85
 MGS: Mountfield SSI Dcy Mogul
 MGD: Velthuis S G Snow Evening



Sexed**ULTRA4M**

CONVENTIONAL **PLUS20™**

- ✓ Milk flow with positive components
- ✓ Calving Ease 6.0%
- ✓ High DPR +1.1 Productive Life +5.2
- ✓ Ideal choice for heifer programs

USDA CDCB Genomic Index April 2018

GTPI	Milk	Fat	%F	Prot	%P	NM\$	CE
2559	1105	70	0.10	48	0.05	710	6.0

DPR	PL	HCR	CCR	SCS	PTAT	UDC	F&L
1.1	5.2	0.8	1.9	2.75	1.95	1.81	2.10

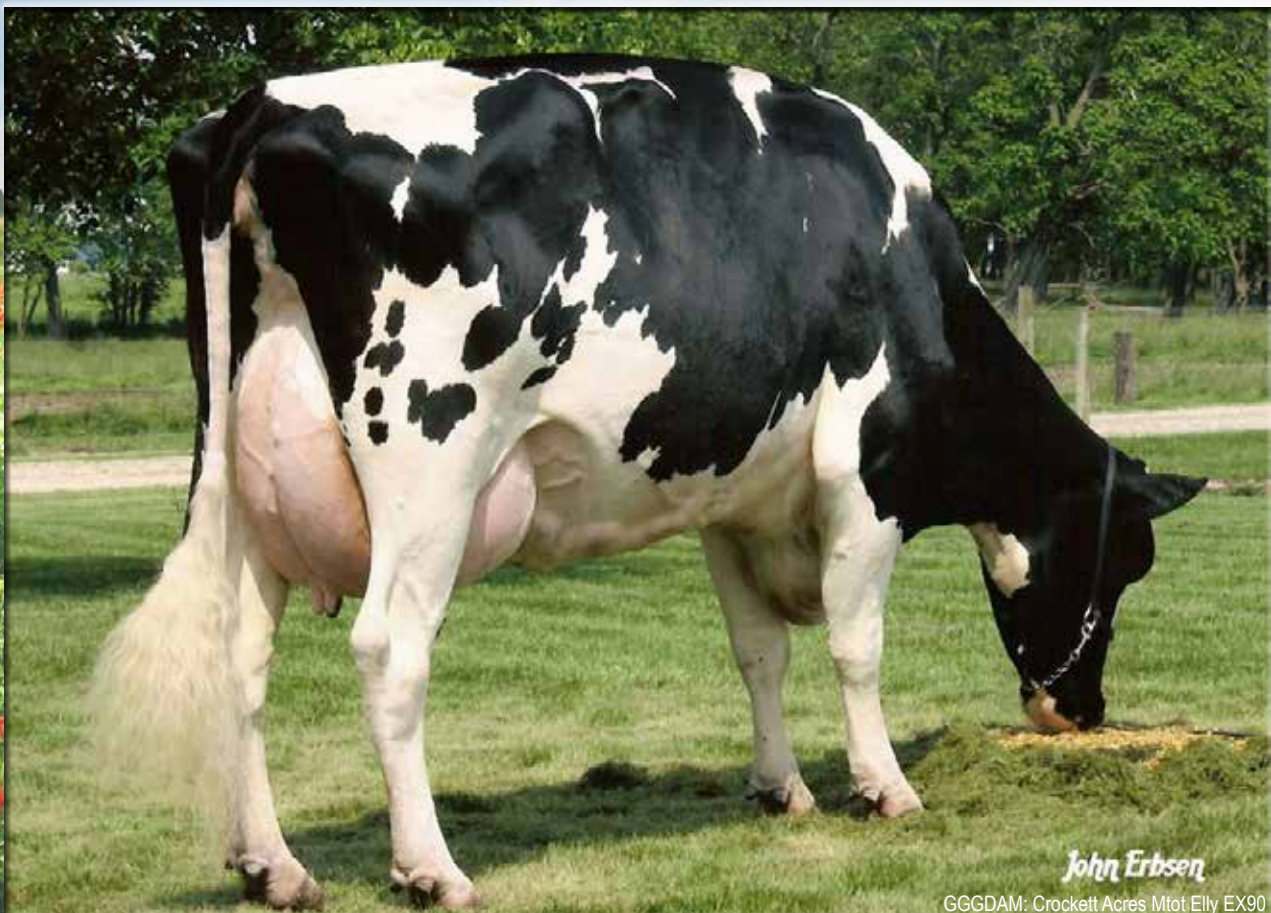
Australian Indices April 2018

BPI	TWI	HWI	ASI	Milk	Fat	Fat%	Prot	Prot%	Rel%
166	130	135	46	332	13	-0.02	8	-0.02	76

DF	CE	FS	SCC	Surv	M/Sp	Temp	Like	Type	Mamm
110	101	-99	138	109	101	102	102	97	100

CONFORMATION		0 Dgts	0 Herds	USDA/HA	Genomic Evaluation	April 2018
PTAT: 1.95		UDC: 1.81		FLC: 2.10		GTPI 2559
Stature	Short					Tall +1.76
Strength	Frail					Strong +0.94
Body Depth	Shallow					Deep +0.91
Dairy Form	Tight Rib					Open Rib +1.46
Rump Angle	High					Sloped +0.56
Rump Width	Narrow					Wide +1.35
RL SV	Posty					Sickle -1.22
RL RV	Hock-In					Straight +2.36
Foot Angle	Low					Steep +2.34
F & L Score	Low					High +2.22
Fore Attachment	Loose					Strong +2.09
Rear Udder Height	Low					High +2.79
Rear Udder Width	Narrow					Wide +2.57
Udder Cleft	Weak					Strong +1.76
Udder Depth	Deep					Shallow +1.41
Fore Teat Placement	Wide					Close +1.63
Rear Teat Placement	Wide					Close +1.99
Teat Length	Short					Long -1.01

RRP \$26.00 SEXED RRP \$55.00



John Erbsen

GGGDAM: Crockett Acres Mtot Ely EX90