

Coomboona Commander **SNOOZER**

Commander / Numero Uno / Planet VG86

Herdbook: AUS1880482 NASIS: TLGSNOOZER DOB: 26/05/2015

Coomboona Commander SNOOZER IMP ET

SIRE: Larcrest Commander

DAM: Coomboona Uno Spooky GP84

MGS: Amighetti Numero Uno

MGD: Gillette S Planet Snooze VG86



CONVENTIONAL PLUS20™ SexedULTRA4™

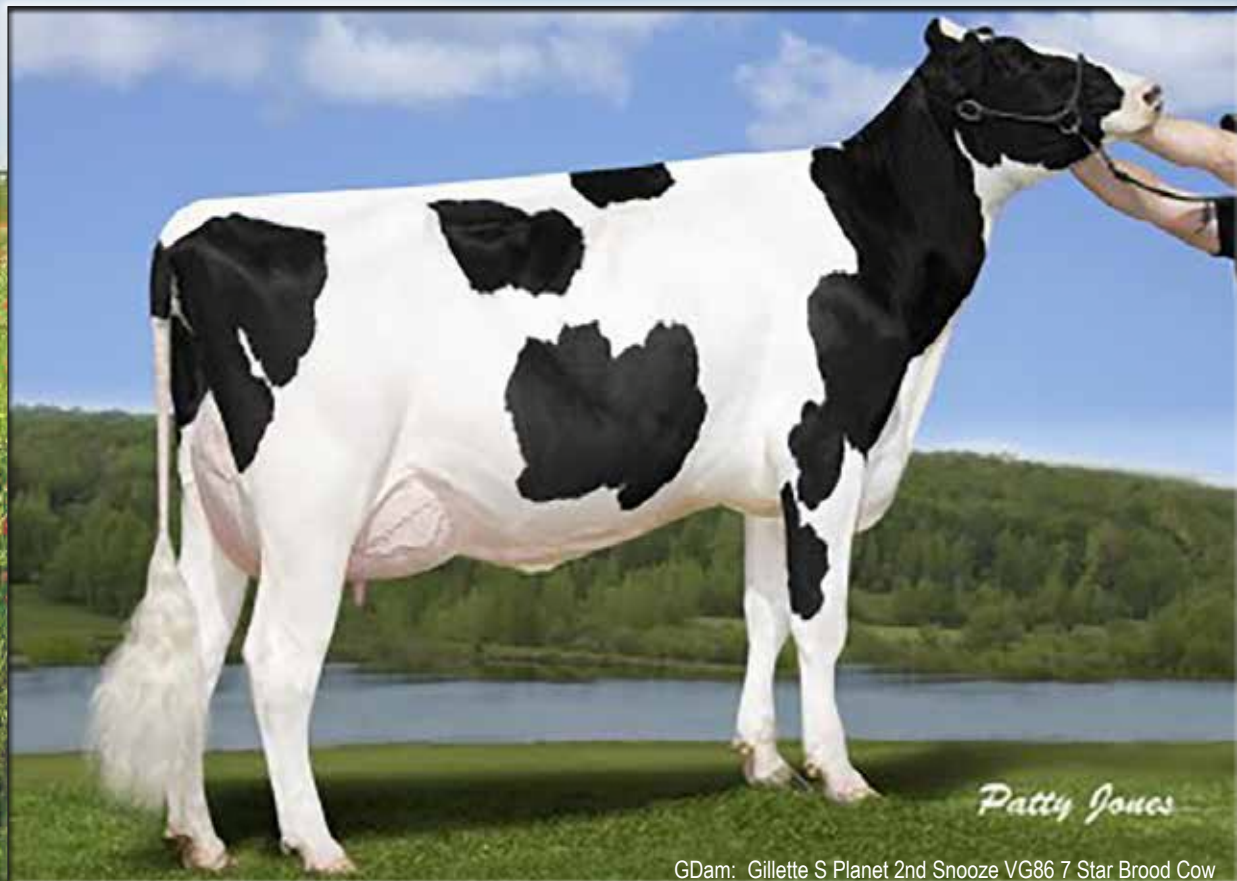
- ✓ *Impressives Udders +2.64*
- ✓ *A combination of Type +2.32 and TPI 2524*
- ✓ *Farmers are impressed with Snoozer calves*
- ✓ *A2/A2 sire*

USDA CDCB Genomic Index							April 2018	
GTPI	Milk	Fat	%F	Prot	%P	NM\$	CE	
2524	573	67	0.17	36	0.07	642	7.5	
DPR	PL	HCR	CCR	SCS	PTAT	UDC	F&L	
1.1	4.6	3.7	1.9	2.72	2.32	2.64	1.03	

Australian Indices										April 2018
BPI	TWI	HWI	ASI	Milk	Fat	Fat%	Prot	Prot%	Rel%	
209	223	180	57	104	16	0.16	6	0.06	76	
DF	CE	FS	SCC	Surv	M/Sp	Temp	Like	Type	Mamm	
108	100	-93	145	110	101	102	103	102	108	

CONFORMATION		0 Dgts	0 Herds	USDA/HA Genomic Evaluation		April 2018	
PTAT: 2.32 UDC: 2.64 FLC: 1.03				GTPI 2524			
Stature	Short				Tall	+1.58	
Strength	Frail				Strong	+1.04	
Body Depth	Shallow				Deep	+0.63	
Dairy Form	Tight Rib				Open Rib	+0.39	
Rump Angle	High				Sloped	-0.76	
Rump Width	Narrow				Wide	+2.33	
RL SV	Posty				Sickle	-0.33	
RL RV	Hock-In				Straight	+1.17	
Foot Angle	Low				Steep	+1.32	
F & L Score	Low				High	+1.25	
Fore Attachment	Loose				Strong	+3.86	
Rear Udder Height	Low				High	+2.93	
Rear Udder Width	Narrow				Wide	+2.70	
Udder Cleft	Weak				Strong	+1.38	
Udder Depth	Deep				Shallow	+3.25	
Fore Teat Placement	Wide				Close	+1.12	
Rear Teat Placement	Wide				Close	+0.94	
Teat Length	Short				Long	-0.72	

RRP \$28.00 SEXED RRP \$50.00



GDam: Gillette S Planet 2nd Snooze VG86 7 Star Brood Cow