

Coomboona Afterburner **EVOLVE**

Afterburner / Mogul VG85 / Snowman

Herdbook: AUS1968589 NASIS: TLGEVOLVE DOB: 31/10/2016

CONVENTIONAL PLUS20™

SexedULTRA4™

RRP \$24.00 SEXED \$50.00

- ✓ *Milk with positive components*
- ✓ *High, wide rear udders*
- ✓ *6.3% Calving Ease*
- ✓ *Ideal choice for heifer programs*

USDA CDCB Genomic Index Dec 2018

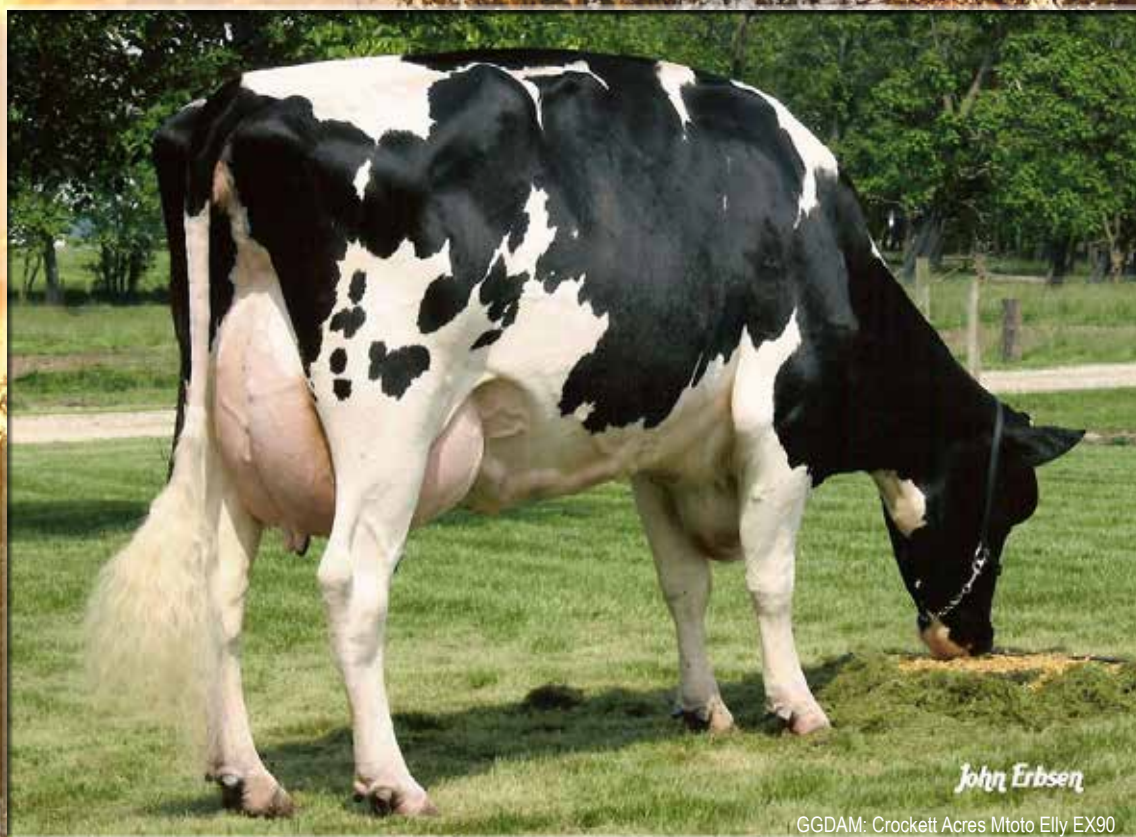
GTPI	Milk	Fat	%F	Prot	%P	NMS	CE
2550	1000	68	0.11	46	0.05	697	6.3
DPR	PL	HCR	CCR	SCS	PTAT	UDC	F&L
2.3	4.5	0.9	2.7	2.77	1.98	1.75	1.73

Australian Indices Dec 2018

BPI	TWI	HWI	ASI	Milk	Fat	Fat%	Prot	Prot%	Rel%
187	152	152	53	451	15	-0.06	10	-0.04	77
DF	CE	FS	SCC	Surv	M/Sp	Temp	Like	Type	Mamm
110	101	-128	149	109	99	101	102	98	101

CONFORMATION 0 Dgts 0 Herds USDA/HA Genomic Evaluation Dec 2018

PTAT: 1.98 UDC: 1.75 FLC: 1.73		GTPI 2550	
Stature	Short		Tall 1.88
Strength	Frail		Strong 0.93
Body Depth	Shallow		Deep 0.93
Dairy Form	Tight Rib		Open Rib 1.46
Rump Angle	High		Sloped 0.26
Rump width	Narrow		Wide 1.55
RL SV	Posty		Sickle -1.53
RL RV	Hock-In		Straight 2.03
Foot Angle	Low		Steep 2.10
F & L Score	Low		High 1.90
Fore Attachment	Loose		Strong 1.84
Rear Udder Height	Low		High 2.89
Rear Udder Width	Narrow		Wide 2.66
Udder Cleft	Weak		Strong 1.64
Udder Depth	Deep		Shallow 1.30
Fore Teat Placement	Wide		Close 1.45
Rear Teat Placement	Wide		Close 1.75
Teat Length	Short		Long -0.77



John Erbsen

GGDAM: Crockett Acres Mtoto Elly EX90