

Miami Viral **GENERATOR**

Viral / Valentino VG86 / Gannon EX93 A2 STATUS: A2/A2
 HB: AUS749183 NASIS: TLGGENERATOR DOB: 09/08/2017



PRODUCTION ABV (g) 04/19			HEALTH ABV (g) 04/19		
Milk	17L	69% R	Cell Count	129	61%
Fat	+10 kg	+0.17	Survival	108	41%
Protein	+8 kg	+0.17	Feed Saved	-88	22%
ASI	73	69% R	Dtr Fertility	99	41%

RRP \$14.00

CONVENTIONAL PLUS20™

- Overall Type 108 and Mammary 105
- Farmer likeability 105
- A2/A2 sire



Grand Dam: Miami Gannon Girlie 4254 EX93

BPI 141	58% R	WORKABILITIES 52% Rel
TWI 189	56% R	Milking Speed 102
HWI 106	50% R	Temperament 104
		Likability 105

CONFORMATION ABV (g) 0 Dgts 0 Herds 48% Rel April 2019			
Overall Type 108		Mammary System 105	
Stature	107	Udder Texture	103
Bone Quality	104	Udder Depth	105
Angularity	105	Fore Attachment	107
Muzzle Width	102	Rear Att Height	103
Body Depth	101	Rear Att Width	101
Chest Width	99	Centre Ligament	104
Loin Strength	103	Teat Placement (Front)	102
Pin Width	103	Teat Placement (Rear)	106
Pin Set	101	Teat Length	99
Foot Angle	106	Rear Leg Rear View	103
Rear Set	94		

Riverside **LEMANS**



Lemonhead / Headline EX91 / Centurion EX91 A2 STATUS: A2/A2
 HB: AUS724347 NASIS: TLGLEMANS DOB: 16/05/2016

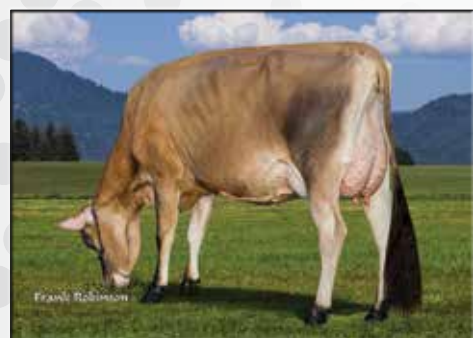
RRP \$14.00

CONVENTIONAL PLUS20™

USDA CDCB Genomic Index April 2019							
GJPI	MILK	FAT	%F	PROT	%P	Rel%	CMS
79	161	35	0.14	8	0.01	75	304
DPR	PL	SCS	GEST LENGTH	HCR	CCR	PTAT	JUI
0.1	4.2	2.87	2	1.0	0.9	0.9	13.30

Australian Indices April 2019									
BPI	TWI	HWI	ASI	Milk	Fat	Fat%	Prot	Prot%	Rel%
78	107	74	18	246	8	-0.11	4	-0.09	76
Daughter Fertility	Somatic Cell Count	Milking Speed	Temperament	Likeability					
97	146	101	102	105					
Residual Survival	Feed Saved	Survival	Liveweight	TYPE	MAMM				
104	0	108	100	102	102				

CONFORMATION 0 Dgts 0 Herds USDA/HA Genomic Evaluation April 2019							
PTAT: 0.9				JUI: 13.30			
GJPI 79							
Stature	Short					Tall	+1.70
Strength	Frail					Strong	+0.20
Dairy Form	Tight Rib					Open Rib	+0.00
Rump Angle	High					Sloped	+1.30
Rump Width	Narrow					Wide	+0.4
RL SV	Posty					Sickle	-0.10
Foot Angle	Low					Steep	+0.30
Fore Attachment	Loose					Strong	+1.70
Rear Udder Height	Low					High	+0.90
Rear Udder Width	Narrow					Wide	+0.00
Udder Cleft	Weak					Strong	-0.30
Udder Depth	Deep					Shallow	+1.80
Fore Teat Placement	Wide					Close	-0.10
Rear Teat Placement - Side	Narrow					Wide	-0.80
Rear Teat Placement - Rear	Apart					Close	+0.50
Teat Length	Short					Long	+0.40



Sister to Dam: Sunset Canyon Valentino L Maid 42481

- Milk with shallow udders
- Wide sloped rumps
- A2/A2 Sire